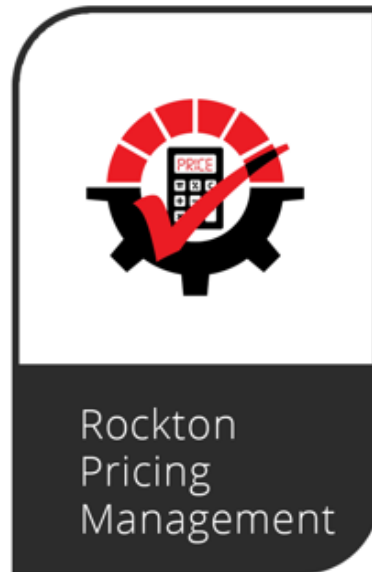


ROCKTON PRICING MANAGEMENT

WHAT'S NEW – WHAT'S NEW 2024



Copyright © 2024 Rockton Software

Table of Contents

- 1. RPM May 2024.....2**
 - 1.1. RPM Data Sync 2
 - 1.2. Company Setup..... 2
 - 1.3. Multi-line Calculations 3
- 2. RPM January 2024.....5**
 - 2.1. RPM Menu Icon..... 5
 - 2.2. Rebuild Toolbars 5
 - 2.3. Document Attributes..... 6
 - 2.4. Batch Recalc Report 6
 - 2.5. Archive and Purge 7
 - 2.6. Dismissed Dialogs 7

1. RPM May 2024

RPM Connector for Dynamics GP

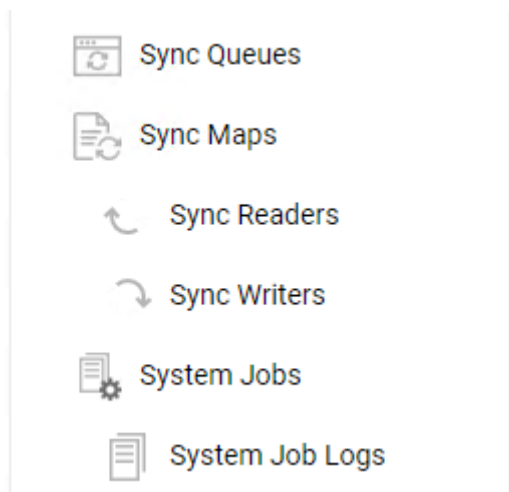
What's New/May 2024



1.1. RPM Data Sync

Data Sync

The new Data Sync feature seamlessly integrates data from your ERP system into RPM, ensuring efficient and synchronized data transfer with minimal latency. Several new entities have been added under the 'Tools' section within Rockton Pricing Management to facilitate this process. These include Sync Queues, Sync Maps, Sync Readers, Sync Writers, and System Jobs, all designed to work together to streamline your data synchronization needs.



For more detailed exploration of the RPM Data Sync function, please refer to the Rockton Pricing Management Management manual.

1.2. Company Setup

Company Setup

There have been new fields added to the Company Setup window. This window is used to enable Rockton Pricing Management (RPM) and configure company-wide settings for the company in which you are currently logged in. To access this window, you must be a User in the RPM ADMIN Security Role or the

POWERUSER Security Role.

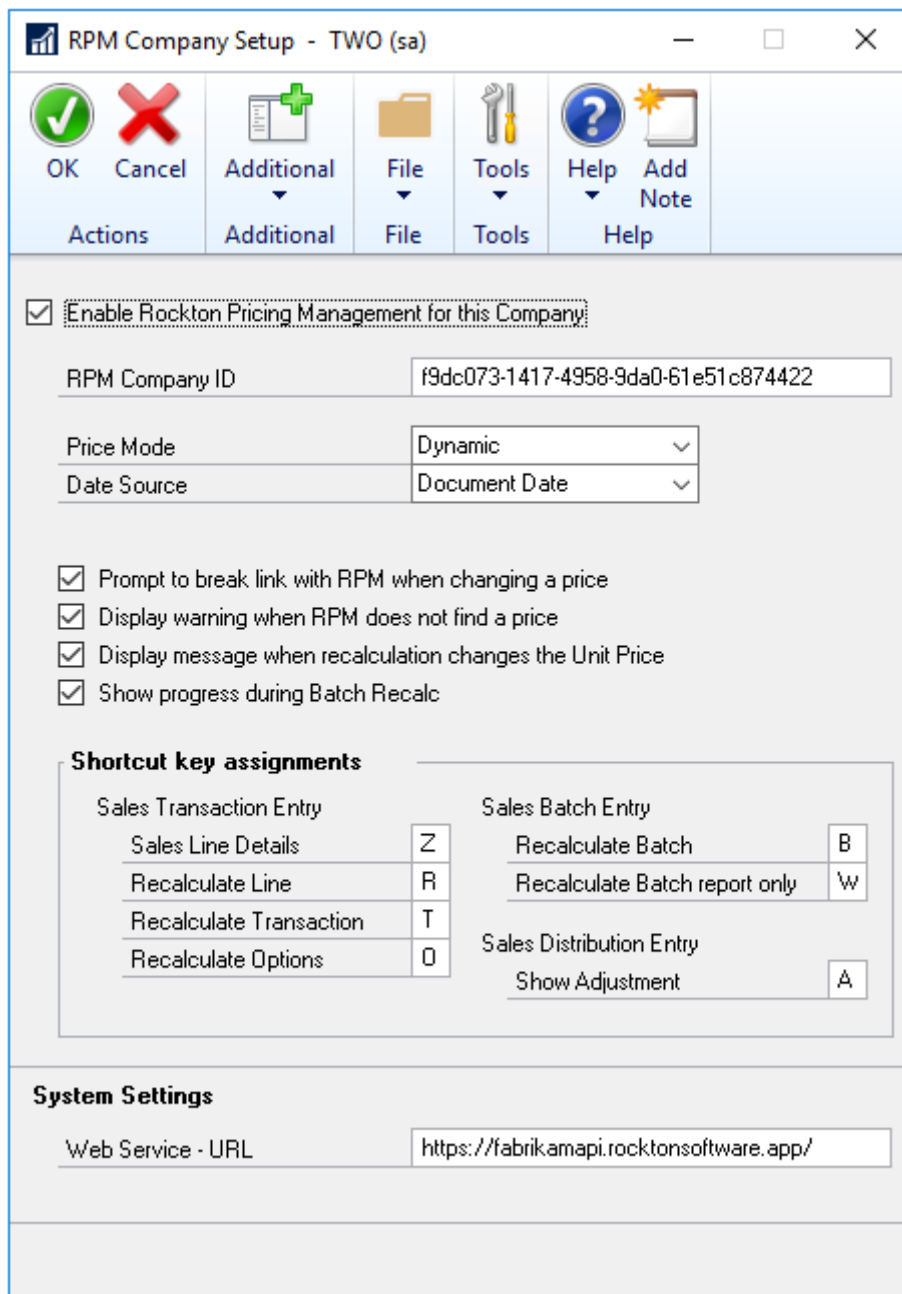
Two new fields have been added:

RPM Company ID

Enter the company ID of the RPM company. This is found under the Current Company ID field in RPM under Settings.

Web Service - URL

Enter the URL of your RPM Web Service.



RPM Company Setup - TWO (sa)

OK Cancel Additional File Tools Help Add Note

Actions Additional File Tools Help

☒ Enable Rockton Pricing Management for this Company

RPM Company ID f9dc073-1417-4958-9da0-61e51c874422

Price Mode Dynamic

Date Source Document Date

☒ Prompt to break link with RPM when changing a price

☒ Display warning when RPM does not find a price

☒ Display message when recalculation changes the Unit Price

☒ Show progress during Batch Recalc

Shortcut key assignments

Sales Transaction Entry		Sales Batch Entry	
Sales Line Details	Z	Recalculate Batch	B
Recalculate Line	R	Recalculate Batch report only	W
Recalculate Transaction	T		
Recalculate Options	O	Sales Distribution Entry	
		Show Adjustment	A

System Settings

Web Service - URL https://fabrikamapi.rocktonsoftware.app/

1.3. Multi-line Calculations

Multi-Line Calculations

RPM has been upgraded to enhance the calculation of Sales Order Processing transactions and Batch Recalculations on Sales batches. It now utilizes Multi-line processing, meaning that RPM simultaneously

processes all lines within a transaction to determine the appropriate pricing, based on the criteria established on RPM Settings.

This enhancement is particularly helpful for complex pricing scenarios, such as Buy One, Get One Free (BOGO) offers, or promotions where customers spend a certain amount over a specified period and receive a discount. For instance, consider a scenario where a customer purchases two items at \$100. Under a BOGO offer, RPM will automatically apply the discount based on your setup in RPM.

In another example, imagine a promotion where customers can spend a total of \$200 across various products and receive a flat \$25 discount on their total purchase. In this scenario where a customer buys three items - priced at \$75, \$50, and \$100 - RPM will recognize that the customer's total spending (\$225) meets the promotional criteria and will automatically apply the \$25 discount to the overall transaction, reducing the total payment due to \$200.

2. RPM January 2024

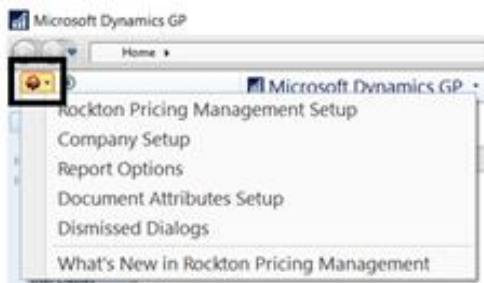
RPM Connector for Dynamics GP

What's New/January 2024



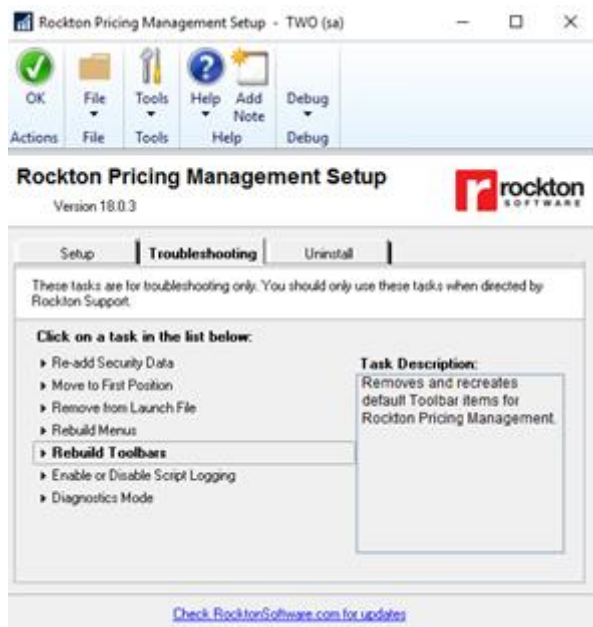
2.1. RPM Menu Icon

A new icon appears for the RPM shortcut on the menu bar. This helps differentiate between the other Rockton Software products.



2.2. Rebuild Toolbars

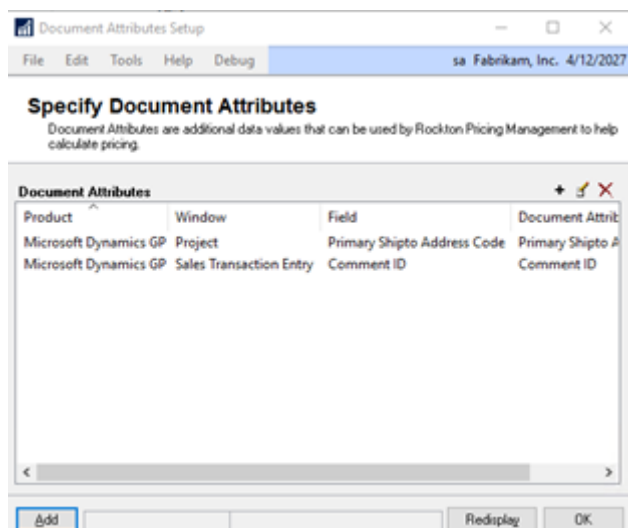
You can now rebuild your RPM Toolbars. This feature is available from the Rockton Pricing Management Setup window, under the Troubleshooting tab. When you click Rebuild Toolbars from the menu, the default toolbar is recreated. This is beneficial should the RPM Toolbar not appear.



2.3. Document Attributes

Previously, Document Attributes were hard coded into RPM and specific fields were used. Now, you may choose what Document Attributes you want to include to help drive the calculated price returned from the pricing engine. Use the Document Attributes Setup window to specify the additional fields you wish to pass to RPM.

This window may be accessed from Microsoft Dynamics GP | Tools | Setup | Rockton Pricing Management | Document Attributes Setup, or from the RPM shortcut on the menu bar.

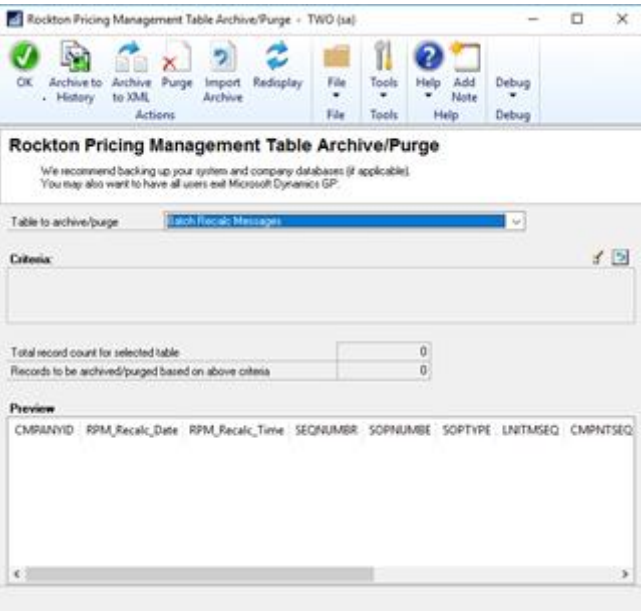


2.4. Batch Recalc Report

When you recalculate a batch of transactions from Sales Batches, you now receive a Batch Recalc Report. This provides you with information on what was recalculated. The Report Options window under Microsoft Dynamics GP | Tools | Setup | Rockton Pricing Management | Report Options allows you to set default options for the report. You can also access this window from the RPM shortcut.

2.5. Archive and Purge

The Rockton Pricing Management Table Archive/Purge window allows you to archive and purge the Batch Recalc messages you receive after you run the RPM – Recalculate Batch process. Access this window from the Rockton Pricing Management Setup window.



2.6. Dismissed Dialogs

The Dismissed Dialogs window allows you to redisplay dialog messages that have been dismissed previously. If you receive a message regarding Document Attribute Instructions and mark the box to dismiss the message in the future, you can use this window to have the message display again. You may access this window under Microsoft Dynamics GP | Tools | Setup | Rockton Pricing Management | Dismissed Dialogs.

Note: The messages are dismissed by User, so changes to these settings will only affect the user making the change, not all users.

